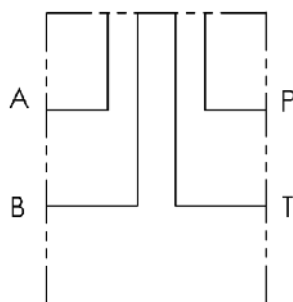
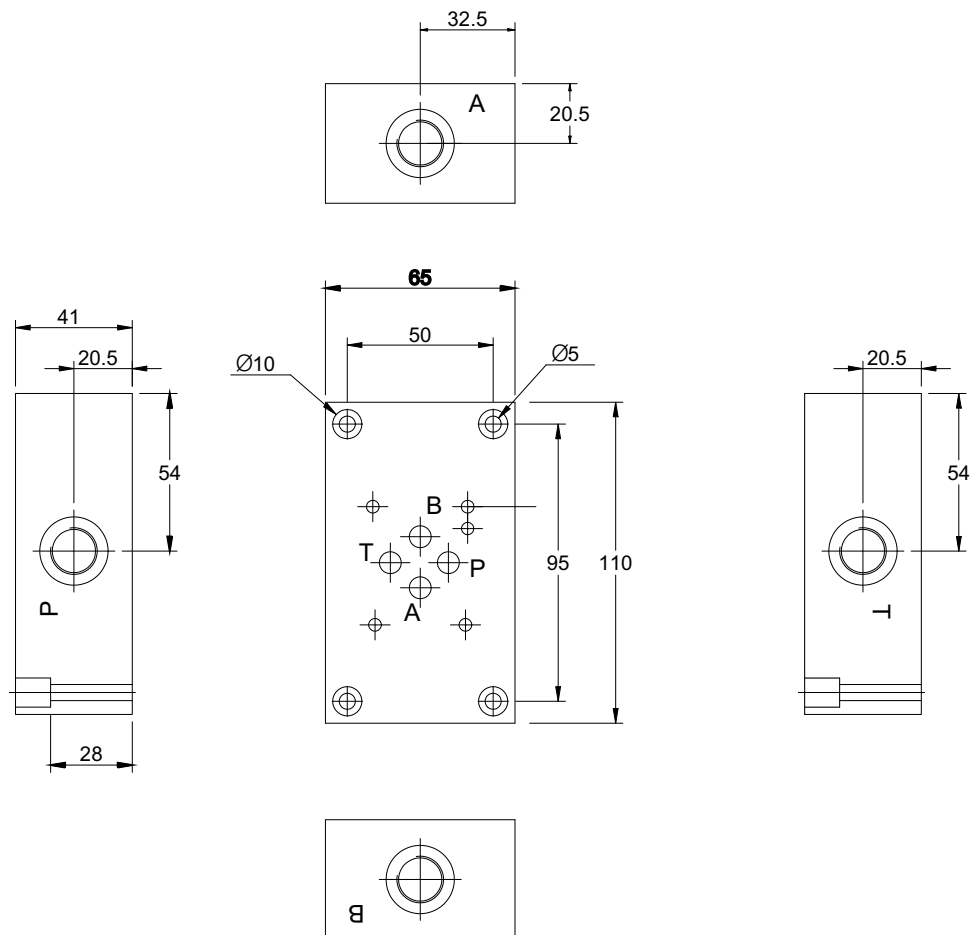


BASE CON COLLEGAMENTO P - T - A - B LATERALI A CROCE
 SINGLE SUBPLATE WITH RADIAL SIDE P - T - A - B PORTS



Versione standard in alluminio
 Standard type with aluminium

Pressione massima di lavoro = 250 bar
 Max working pressure = 250 bar

Esempio codice di ordinazione - Ordering example

BSA 06 # L

Base in alluminio
 Aluminium subplate

CETOP 3 - NG 06

A = (P - T - A - B) G1/4
 B = (P - T - A - B) G3/8

(P - T - A - B) laterali a croce
 Radial side (P - T - A - B) ports